

PRELIMINARY ANNOUNCEMENT



Finished Lot Offering for Single Family Detached in Central Orange County (4 Models and 32 Finished Lots) Stanton, California



CAMBRIA



LEGEND

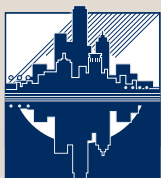
- PLAN ONE
- PLAN TWO
- PLAN THREE
- PLAN FOUR
- PLAN FIVE
- M - MODEL



Map Not To Scale



The seller reserves the right to make changes in plans, features, prices, special offers and terms without prior notice. All homes are subject to prior sale. All renderings, floor plans and maps are artist's conception and are not intended to be an accurate representation of buildings, fencing, walks, driveways or landscaping and are not necessarily to scale.



Urban Infill Properties, Inc.
4255 Martingale Way, Suite C
Newport Beach, CA 92660
www.infillproperties.net

Broker I.D. 01417435

FOR MORE INFORMATION, PLEASE CONTACT

Greg Sullivan
949.251.1100 tel
949.251.1115 fax
greg@infillproperties.net

Rick Hill
949.250.0401 tel
949.251.1115 fax
rick@infillproperties.net

While the information contained herein has been gathered from sources we deem reliable, neither Broker, nor Owner, make any representation as to its accuracy or completeness and assume no liability. It is the responsibility of any investor/builder interested in the property to perform its own independent investigations and analysis of the property to determine if the property fits its particular requirements.

PRELIMINARY ANNOUNCEMENT



Finished Lot Offering for Single Family Detached in Central Orange County (4 Models and 32 Finished Lots) *Stanton, California*

Development Highlights:

High barrier to entry market with extremely limited competitive new product.

4 Models complete in January 2010, and 1st phase deliverable in March 2010 for quarter end.

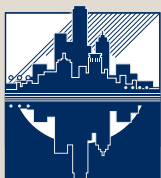
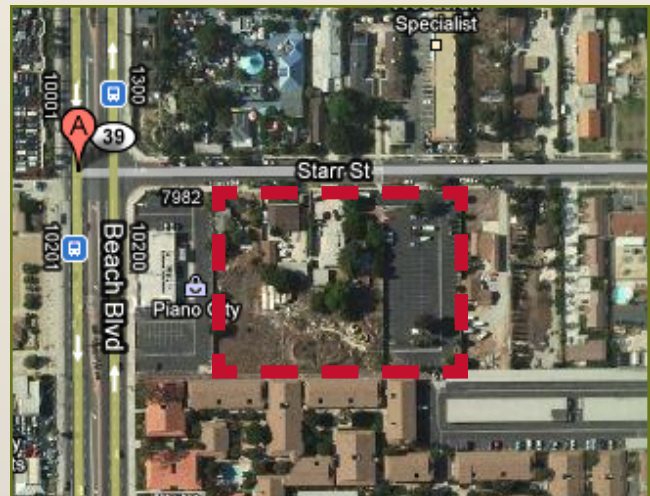
Five different floor plans, many with ground floor bedrooms specifically designed to appeal to target buyer demographic.

Appealing site plan that includes community playground, barbeque area and massed visitor parking.

Detached entry level product designed for the most active segment of the market with no CFD's.

Please visit www.infillproperties.net often as we are populating our website with Due Diligence material and Offering Memorandum.

Offers will be responded to as submitted, however, no offers shall be accepted after **December 4, 2009**.



Urban Infill Properties, Inc.

4255 Martingale Way, Suite C
Newport Beach, CA 92660
www.infillproperties.net

Broker I.D. 01417435

FOR MORE INFORMATION, PLEASE CONTACT

Greg Sullivan

949.251.1100 tel
949.251.1115 fax
greg@infillproperties.net

Rick Hill

949.250.0401 tel
949.251.1115 fax
rick@infillproperties.net