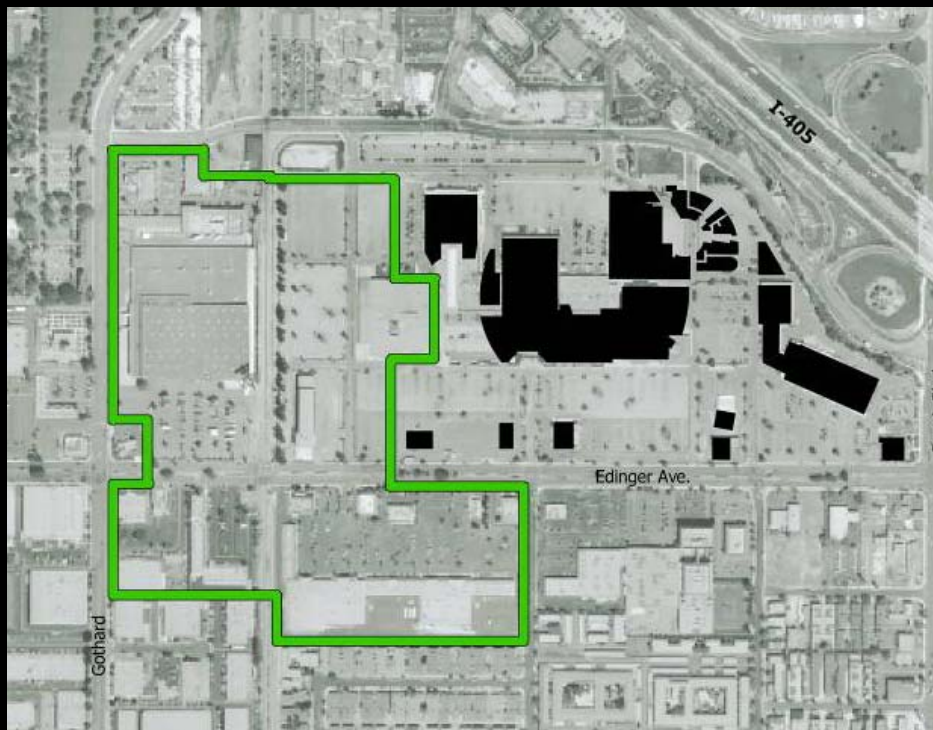
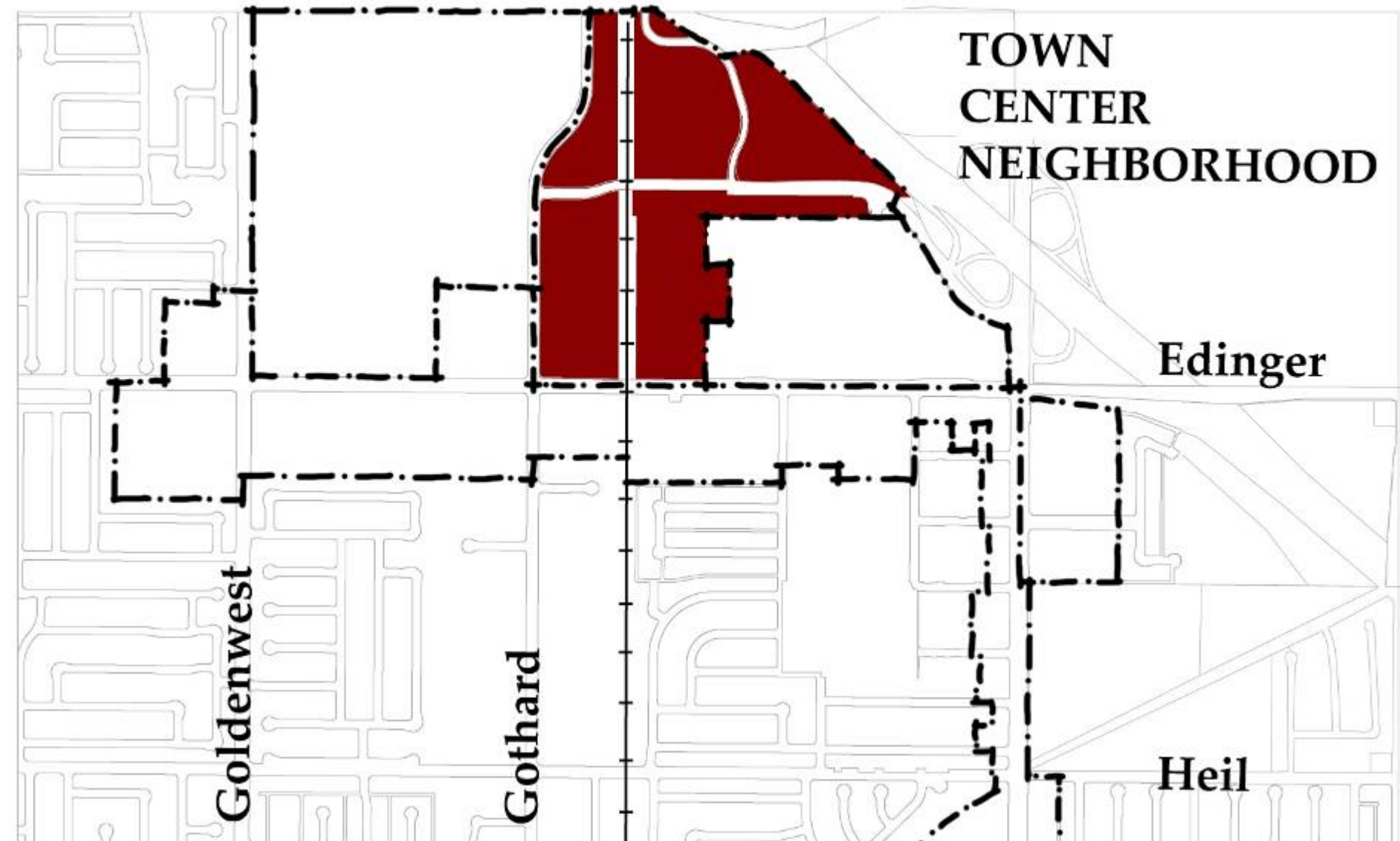


Lingering Disinvestment = Opportunity to bolster the performance of Bella Terra/Edinger. . .



. . . and enhance the identity of this part of the City

Town Center Neighborhood







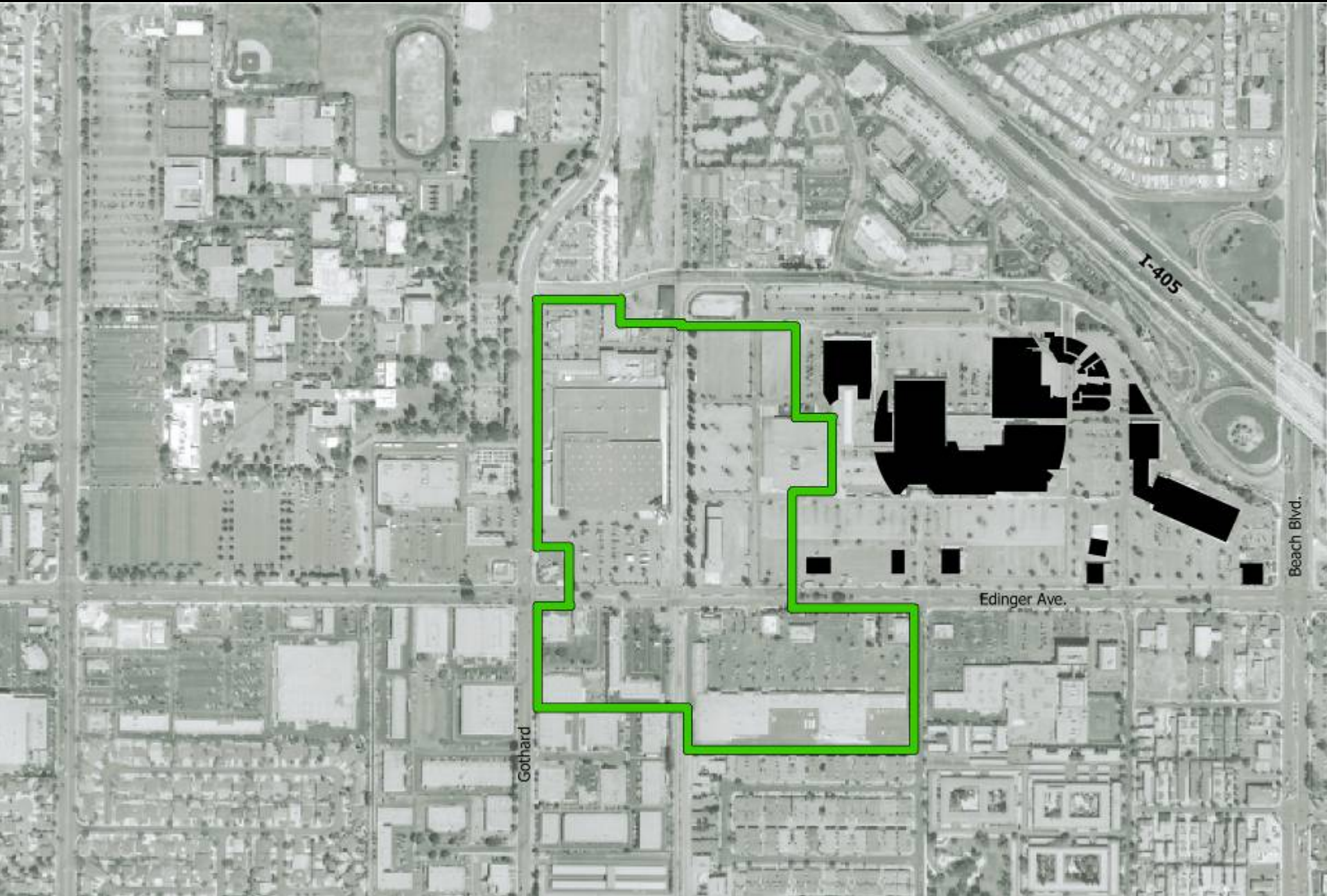
WALD'S

Massage Envy

FALCETS FACORS

mervyns

STOP



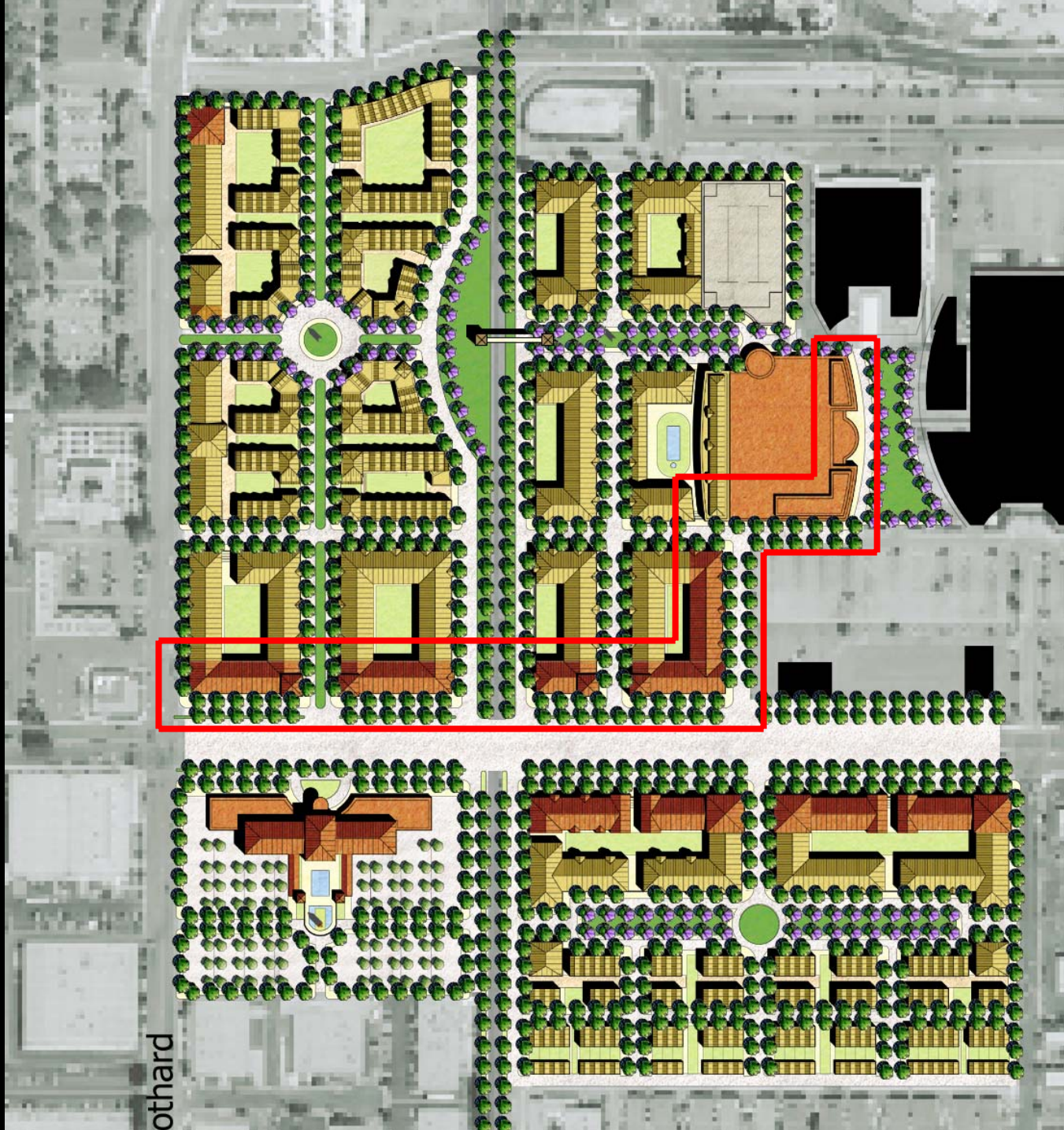
I-405

Edinger Ave.

Gothard

Beach Blvd.

Town Center Neighborhood: Core Edge



othard

Along Bella Terra and Lining Edinger: Ground-Level Retail Shopfronts

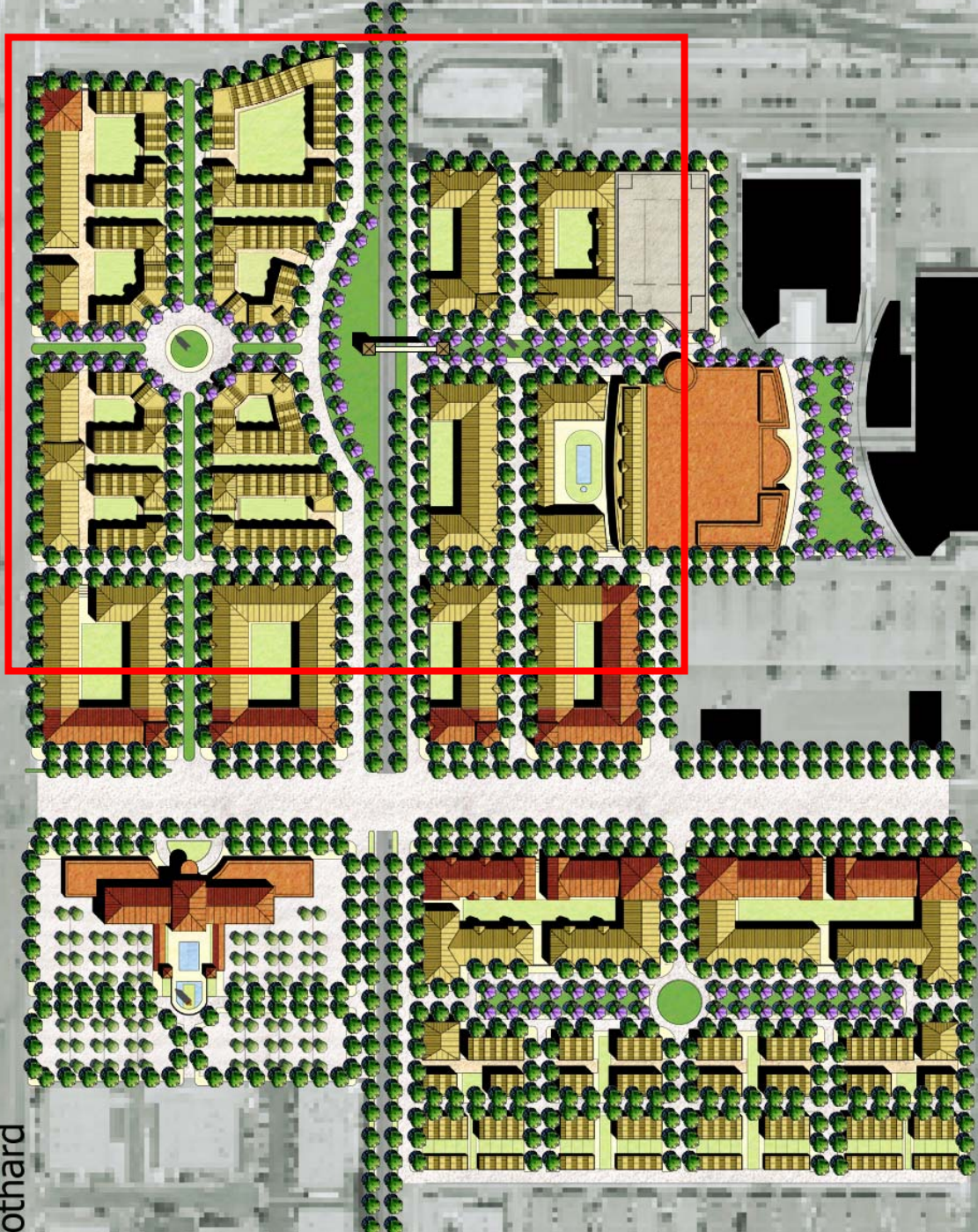


Envisioned Character: Core Edge



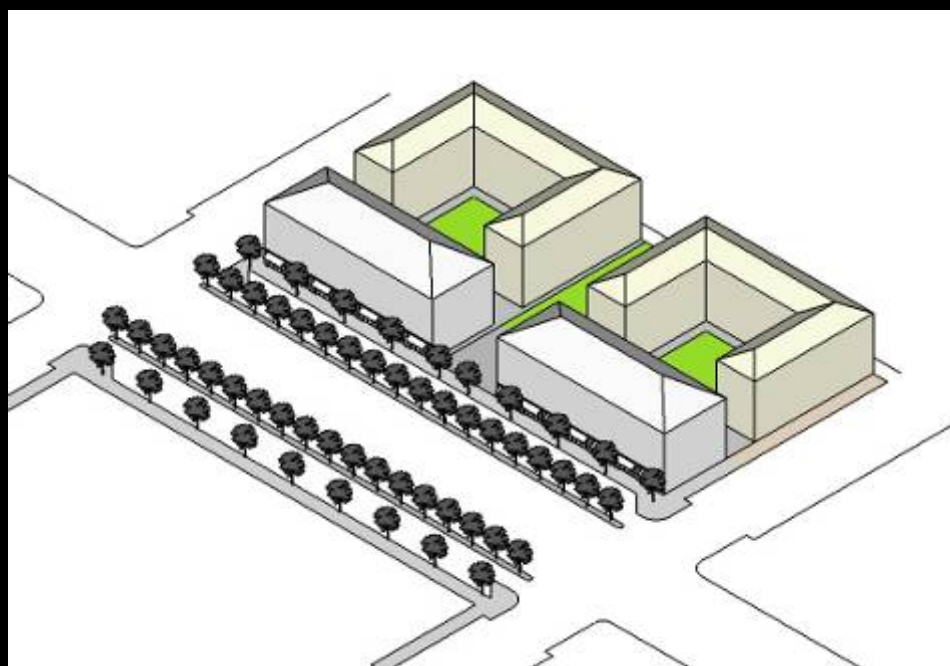
Cohesive building types and
frontage treatment

Town Center Neighborhood Interior



othard

Envisioned Form: Town Center Neighborhood

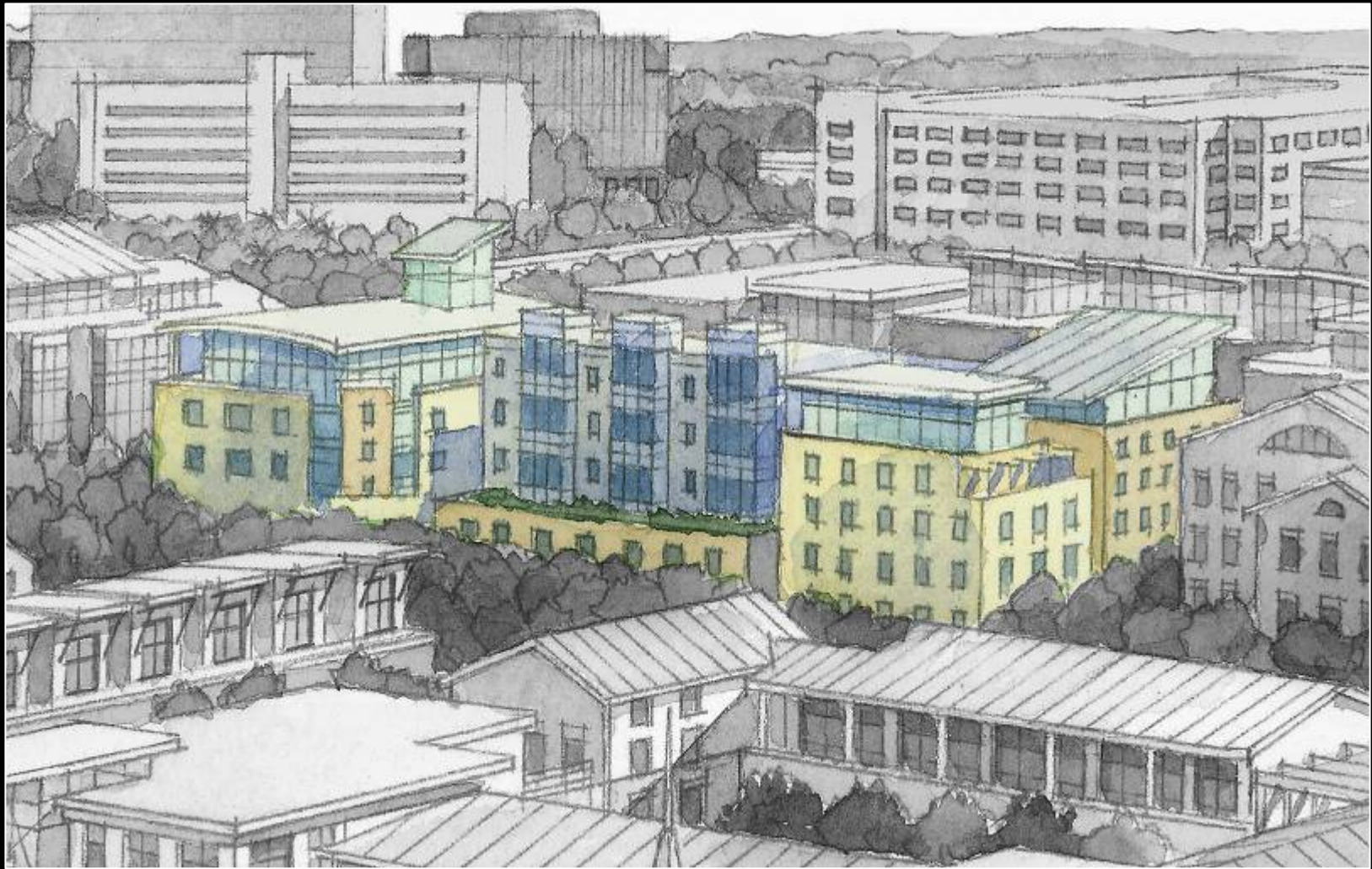


Minimum 2 Stories
Maximum 6 Stories



Housing, Office Lodging,
Corner Store Retail

Envisioned Form: Town Center Neighborhood



Housing, Office Lodging,
Corner Store Retail

Minimum 2 Stories
Maximum 6 Stories

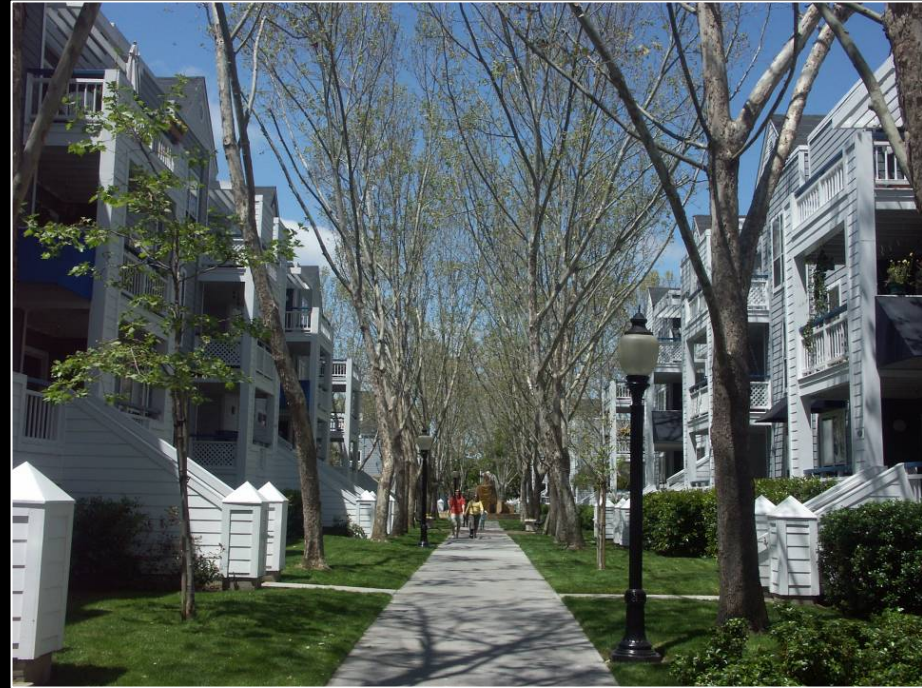
Envisioned Character: **Town Center Neighborhood** Mixed-Use / Housing, Office, and Lodging



Not Permitted



Envisioned Character: Town Center Neighborhood Interior



Ground-level entrances and windows facing public streets and public open spaces

Not Permitted



No usable public space; mostly impermeable surfaces





Huntington Beach Character Summary ~ Buildings and Architecture



- Elegant, traditional feel
- Good for mixed-use
- Arched elements
- Compliments Bella Terra
- Projections and recesses
- Balconies and rails
- Horizontal elements distinguishes uses/floors
- Attractive roof line
- Variation, not a box



- Timeless
- Breaking up of the mass
- Spanish stucco style
- Variation, not a box
- Balconies
- Arches
- Mixed-use and good integration of multiple uses
- Corner element and tower feature



- Modern interpretation of the beach
- Simple
- Ocean colors
- Mix of materials
- Large windows
- Stone
- Siding
- Scale



- Clean look
- Classic
- Timeless architecture
- Scale
- Interaction with the street
- Flexible format for multiple uses



- Beach feel
- Good colors
- Cottage architecture
- Varied height and masses
- Appropriate near the beach



Image © 2007 DigitalGlobe

Google

Pointer 33°43'49.38" N 117°59'52.90" W

Streaming 94%

Eye alt 886 ft

Envisioned Character: Town Center District



Town Core Edge

Ground Floor
Retail Required

Residential,
Office, Lodging
Above

Minimum 2 Stories
Maximum 4 Stories

